



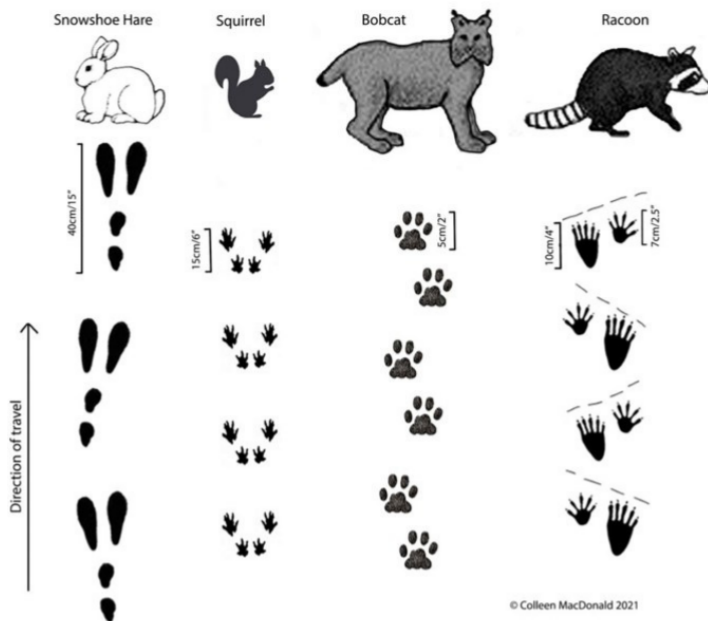
THE ROOKERY

winter 2023



Brrrrrrrr! It's cold out there! But there is no such thing as bad weather, only bad clothing. Winter is a beautiful time to visit the trails at the Refuge. So dress warmly and come on out for walking, snowshoeing, cross-country skiing and snow angel making.

There are still some birds around and they're easier to see in the bare branches. You may find animal tracks in the snow. See if you can identify the ones you find.



Borrow snowshoes from
Swanton Recreation
(802) 868-2493



COMING EVENTS

- **Bats with Barry Genzlinger:** January 11, 7 p.m. - Zoom (see Friends of the Missisquoi website for link)
- **Owl Prowl:** Meet at Steven J. Young Trail parking lot - Saturday, February 24 at 5:30 p.m. Pre-registration required - See Friends of the Refuge website for details.
- **Bird Tales:** Stories from Green Mountain Audubon - February 1, 7 p.m. via Zoom (see Friends of the Missisquoi website for link)



Winter Birds of Vermont

Many birds stay around to winter in Vermont. See how many you can count as you walk the trails. Chickadees are the most vocal and numerous, but there are downy and hairy woodpeckers, goldfinches, cardinals, purple finches, red-breasted nuthatches, common redpoll, and the tufted titmouse. Take pictures and share to our Facebook page!



Winter Wordsearch



K N A M W O N S T N X O T F E
K O W I N T E R E C O C O A L
P I C I C L E I Z R R R B K G
C H M B W M I T T E N S M W I
H S G H W S Z I W D Y F E A L
T G H Q R A K E N E Z O R F A
O L X O D S S P R U C E I S U
B O J E V C A R D I N A L N A
O V R N L E B G O T A H I O R
G E T C H I L L Y G Z O M W D
G S P C D O K T Z G Q L K F B
A C T S K A T E X S C L D L S
N I Z M M Y W F E X D Y E A H
C W N L U T G Y N S O A L K B
S D O Q V L Q K H W M Q S E A

WINTER
SNOWFLAKE
SNOWMAN
ICICLE
SPRUCE
HOLLY
CARDINAL
FROZEN
BRRR
CHILLY
SLED
GLOVES
HAT
SKATE
SKI
TOBOGGAN
COCOA
SHOVEL
MITTENS

5 Trails to Explore!

Walk all 5 trails and get a badge!

Some trails closed prior to Dec. 11.

Check website for details.

Missisquoi National Wildlife Refuge Foot Trails



Trail Guidelines

- Open sunrise to sunset
- Foot traffic only
- Stay on the path at all times
- Carry out your trash
- Plant and animal harvesting allowed by permit only
- Dogs allowed on a leash



Become an Agent of Discovery!

Download the free app and become a top-secret agent ready to solve mysteries of the natural world. Begin your adventure here at the Refuge!

